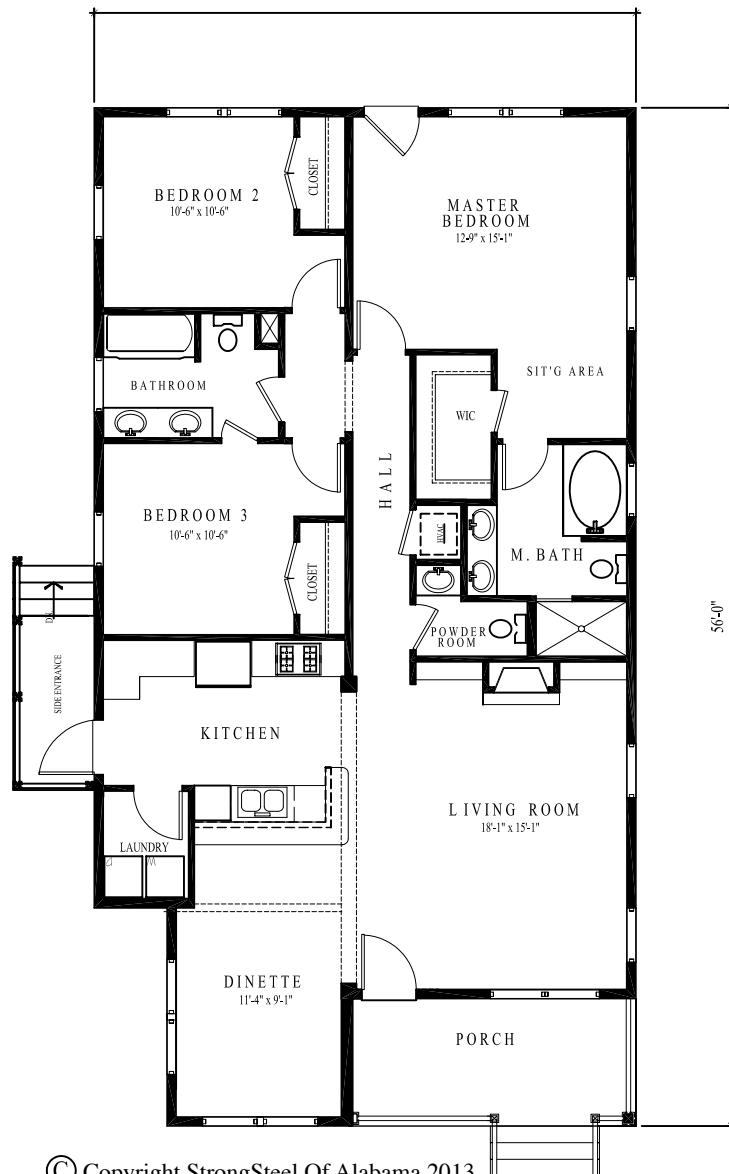
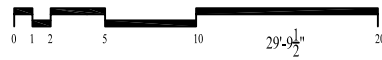


model: The Cape San Blas
 size: 29'-9" x 56'-0"
 sq. footage: 1,510 (HTD)
 1,619 (Total)
 bedrooms 3
 baths: 2 1/2



CAPE SAN BLAS



StrongSteel of Alabama
 400 Progress Drive
 Andalusia, Alabama 36421
 ph: 1-(603) 235-7262
 tf: 1-800-200-STEEL
 www.greensteelhomes.com
 email:sales@greensteelhomes.com